

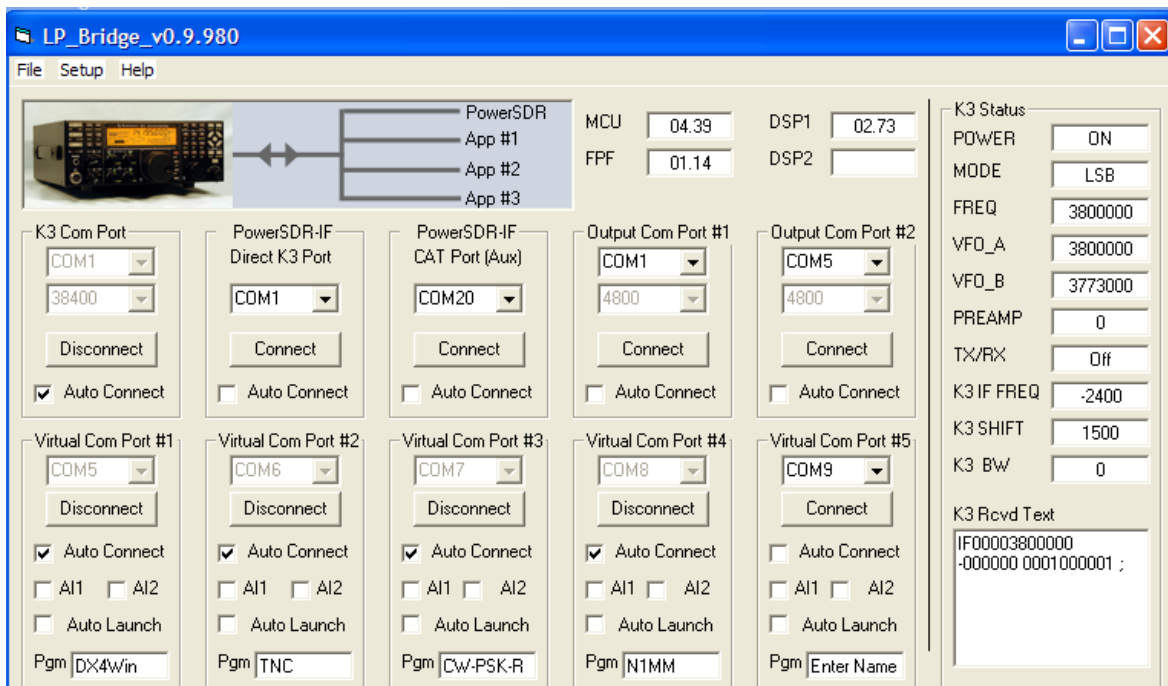
LP_Bridge Software Configuration & Use by Tony McClenny, N3ME

This document will explain how to use LP_Bridge software with an Elecraft K3 radio and provide multiple "virtual" serial ports. This software only works in conjunction with a K3 radio.

Using this software, one can have multiple programs running without the requirement for additional hardware serial ports.

Other documents for K3 software operations are provided on my website:
www.n3me.net

The below picture is a screen shot of my setup of the software. Your setup will surely vary, but I believe you will find this software to be absolutely invaluable.



Connection Notes:

1. My K3 has a mono cable running from the "Line In" port to my computer sound card's "Line Out" port.
2. My K3 has a stereo cable running from the "Line Out" port to my computer sound card's "Line In" port.
3. My K3 has a 9 pin serial cable running from the RS-232 port to my computer's COM1 hardware serial port.
4. My K3 has the MENU CONFIG
 - a. PTT-KEY set to rtS-dtr
5. My K3 has the MENU MAIN
 - a. MIC SEL set to FP.L
6. My K3 has the MENU MAIN
 - a. Mic + Lin set to On

When the LP_Bridge software loads on your computer (mine is in my Startup folder and runs immediately upon the computer booting up).

You must first activate the K3 Com Port using the physical hardware COM Port on your computer. I am using COM 1 with 38400 baud and have placed a checkmark in the box in front of "Auto Connect" for each of the Com Ports I am using. By doing this, when you start your computer and turn your radio on, the LP_Bridge software will immediately connect to the K3 and then within seconds activate the "Virtual Com Ports" you have selected.

As I only operate CW, PSK or RTTY programs one at a time, I only set one "Virtual Com Port" for these programs. As I wish to be able to run my DX4Win logging program most of the time and N1MM logger during contest activities, I have set a separate "Virtual Com Port" for each program.

Set the "Virtual Com Ports" you wish to use. As seen in my example, I use "Virtual Com Ports":

- 1 for my day to day logging program DX4Win
- 2 for my TNC
- 3 for CW Decoder, WinPSK and MMTTY
- 4 for N1MM

Remember to individually configure each individual program such as DX4Win, N1MM, MMTTY, WinPSK, etc. to operate on the "Virtual COM PORT" you have specified in LP_Bridge. These programs and others like them are written to be operated on hardware serial ports, BUT they will operate perfectly on the "Virtual Com Port"s when you use LP_Bridge.

Send the software author a contribution - this is fantastic software.